

# **HORSE PROTECT**

## **POLYURETHANE kick board**

### **for horse boxes**



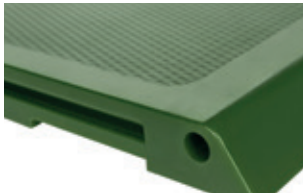
Horse boxes · Nursing beds · Veterinary clinics



**WORLD FIRST!**

*made in Germany*





Polyurethane kick protector,  
1250x400mm, 27mm thick



HP posts right/left  
1250mm 70mm wide



HP corner profile with protective  
cap 30/30/1200mm



HP stainless steel suspension rail  
with holes

## HORSE PROTECT protects your horse!

Horse Protect, the new elastic impact protection system for your horse, cushions direct blows through its elastic polyurethane air-filled half pipes on the back of the sheet. When rolling, your horse's hooves merely slide off the smooth, wear-resistant surface and are protected from making contact with metal edges, steel profiles or masonry. Side kicks when eating or protecting food are optimally cushioned. Offers a high degree of security, no risk of injury to your horse. In addition, the material is urine-resistant and extremely durable, and equipped with a bite-resistant rounded upper and lower edge.

The interlocking tongue-and-groove system with stainless steel suspension is exactly measured and easy to assemble, and does not require glue. Rust-free round aluminium bolts in the connection channels provide optimum stability when attaching the upper and lower edges. Stable side-mounted posts with tongue and groove connectors ensure a quality finish, as does further anti-bite protection on doors and troughs.

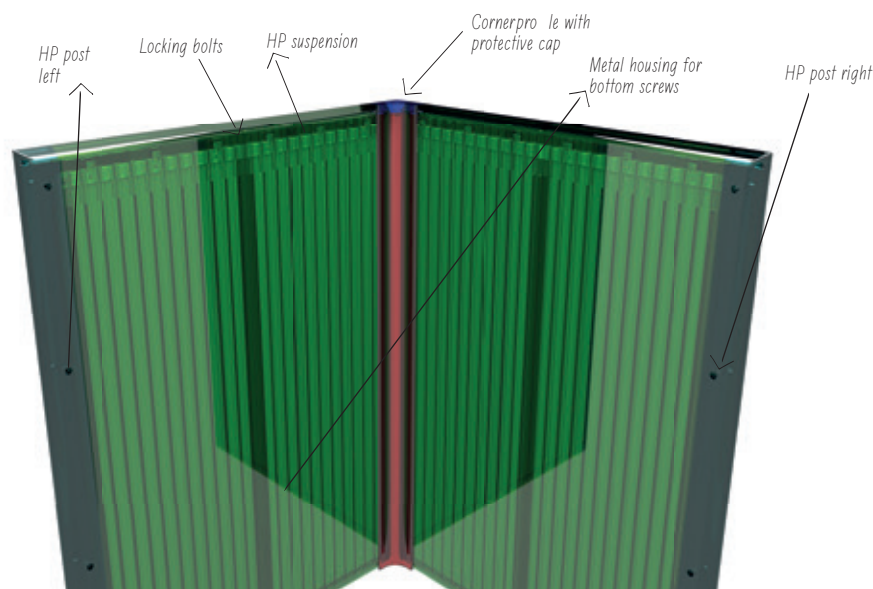
The product is also available in various (including light) colours for all your aesthetic needs.

### Further benefits of Horse Protect:

- **partial assembly:** Specific impact areas can be equipped  
-> can be easily extended
- **Relocation:** The system can be easily dismantled and reassembled in another box
- **Dimensions:** 1250mm high and 400mm wide, sheet thickness 27mm

### Our PU system offer the following technical features:

- Far superior abrasion/wear resistance in comparison to rubber
- Holds its shape very well, great cushioning effect
- Colours are chemically bonded, so there is no risk of dye transfer
- Great notch impact toughness
- High tensile strength and elasticity
- PAH-free
- Material can be equipped with the following features:  
Hydrolysis protection, antimicrobial protection, flame retardant version, antistatic version





## ASSEMBLING Horse Protect



### 1. Determine height

Determine the height of the upper edge of the Horse Protect (HP) sheet. Affix the screws and the suspension rail to the wall, leaving enough room for the connector posts. Screws and suspension rail included in delivery.



### 2. Start with the connector posts

Join the left-hand connector post to the first HP sheet. Position the sheet over the suspension rail and line up the hooks with the recessed pockets. Screw in the post.



### 3. Assembly

Hang the HP plates one after the other, locking each plate using the pre-assembled locking pins. Locking tool included in delivery!



### 4. End with the connector post

Cut the last sheet to size if necessary, and clamp in place with the right-hand connector post. Screw in the post and screw the sheet in at the bottom.



### 5. Bottom screws

Screw in the bottom edge of the HP sheet using the holes provided, reinforced with moulded metal washers if necessary.

**As easy as that!**  
Calculate the exact number of sheets required for your horse box!  
[www.groene-gmbh.de](http://www.groene-gmbh.de)

**Assembly instructions as video**  
[www.groene-gmbh.de](http://www.groene-gmbh.de)



Also available in grey and brown.

# **HORSE PROTECT**

## **POLYURETHANE kick board**

### **for horse boxes**



Photos: Foto Hölzen

Recommended by professionals: Alessandro Alemani

### **TOP EXCLUSIVE!**

Available in addition to "Horse Protect", our G2000 rubber flooring mats! Direct from the manufacturer.